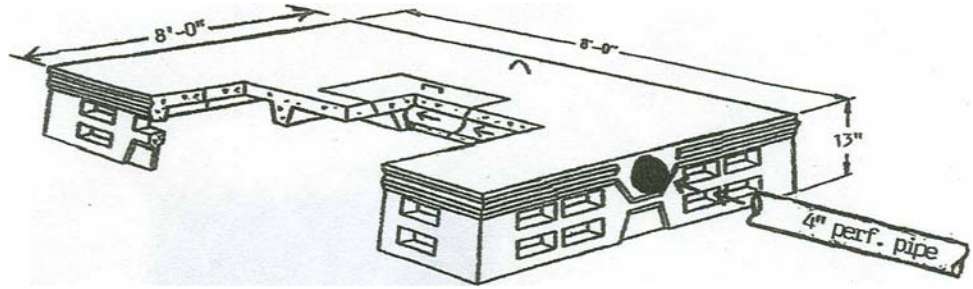


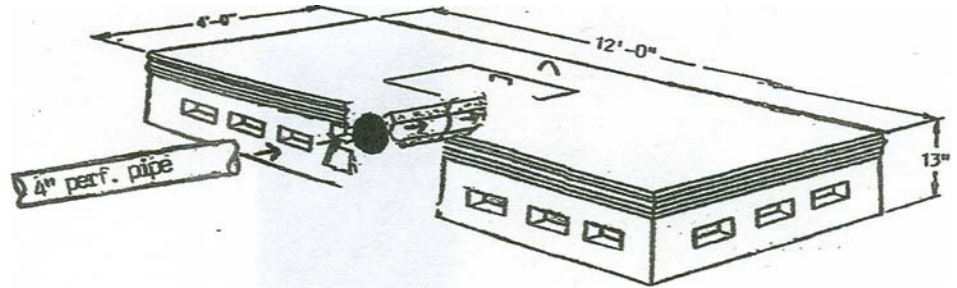
CONCRETE CHAMBERS

8' x 8' CHAMBER (8'Side)

H-20 loading certified



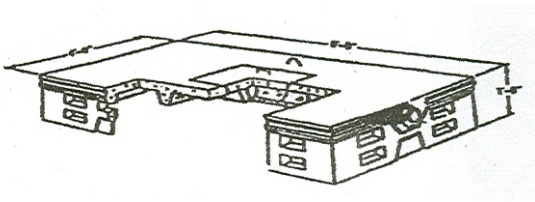
4' x 12' CHAMBER (12'Side)



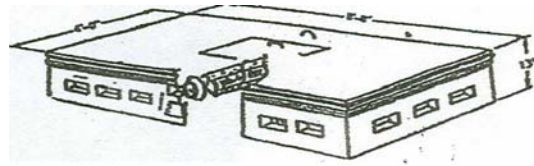
<u>Chamber Size</u>	<u>Line In</u>	<u>H</u>	<u>H.I.</u>
*4' x 12' Chamber	12'Side	13"	5"
*8' x 8' Chamber	8'Side	13"	5"
*4' x 8' Chamber	8"Side	13"	5"

these chambers need 4"perforated pipe

4' x 8' Chamber (4'End) Built in Precast Pipe



4' x 8' Chamber (8'Side)



<u>Chamber Size</u>	<u>Line In</u>	<u>H</u>	<u>H.I.</u>
4' x 8' Chamber	4'Side	13"	7"
4' x 8' Chamber	8'Side	13"	6"
4' x 8' Chamber	4'Side	18"	12"