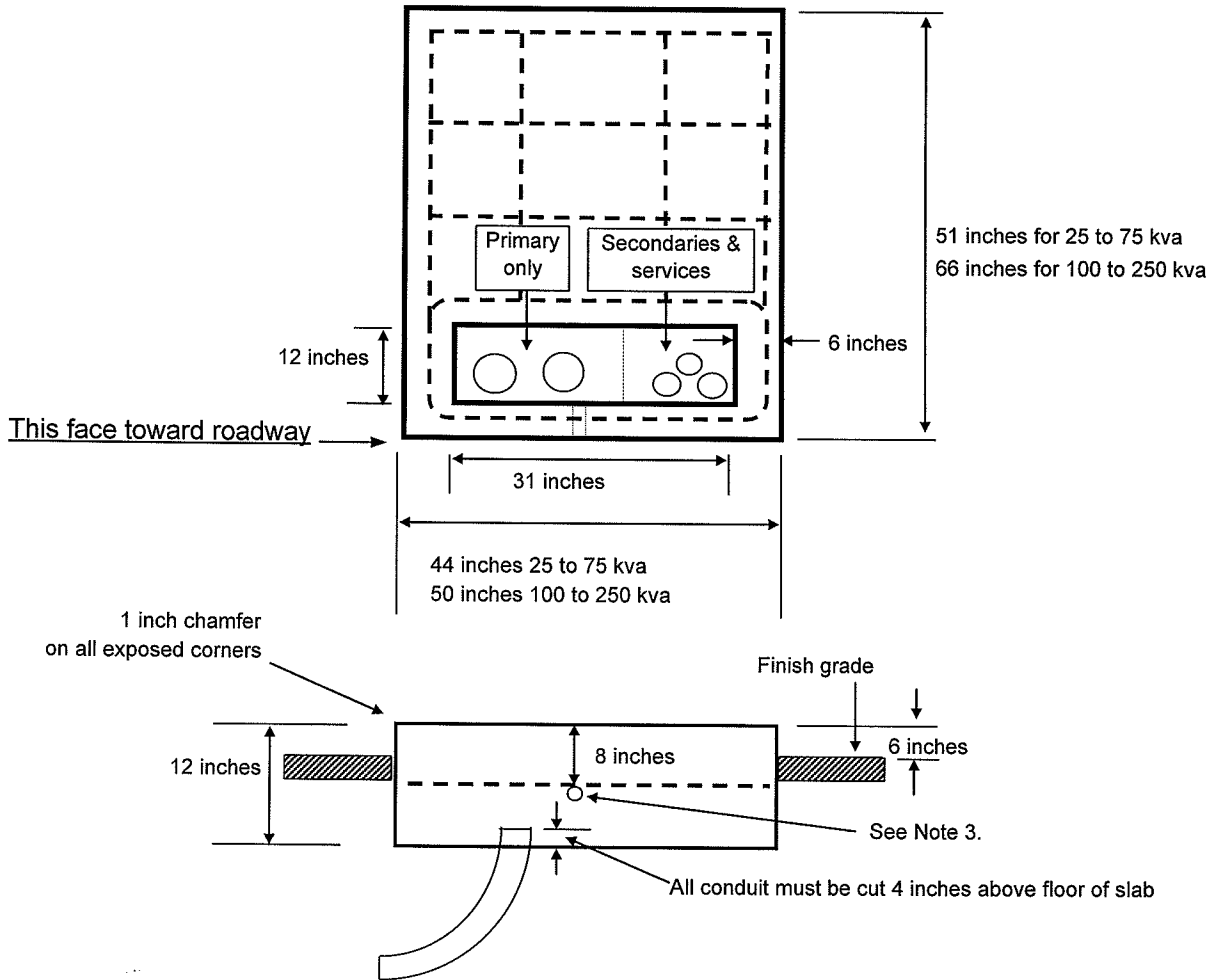


SINGLE PHASE TRANSFORMER FOUNDATION DETAIL



Notes:

1. See sheet "Requirements for Padmounted Transformer Slab Details."
2. All reinforcing to be #6 bars
3. 1 inch PVC conduit sleeve for ground grid leads
4. See sheet "Pad-Mount Equipment Grounding Grid" DTR 56.223



Public Service
of New Hampshire

CONSTRUCTION REQUIREMENT

ISSUE	DATE
Original	1/75
Rev.	3/6/00