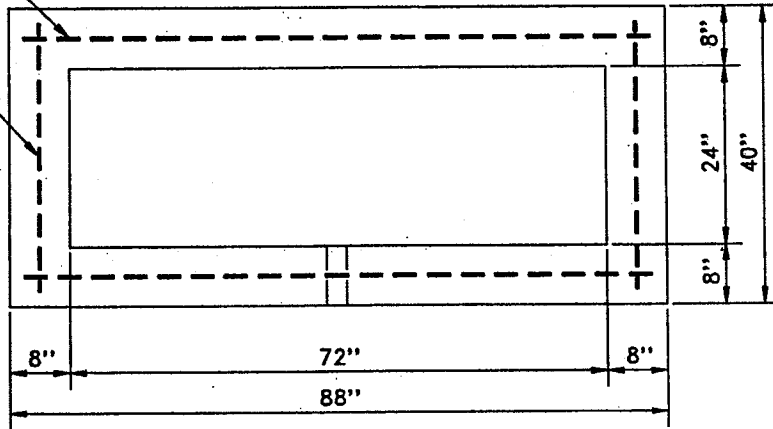


3Ø CONCRETE PIT FOR PAD (750 TO 2000 KVA)

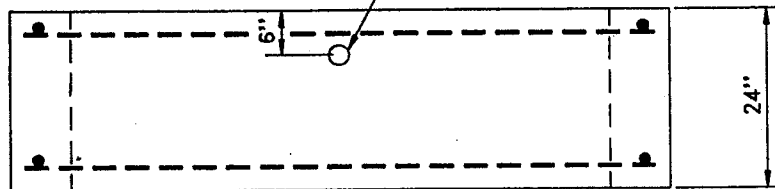
53113

4 BARS TOP AND
BOTTOM TYPE S1

4 BARS TOP AND
BOTTOM TYPE S2



SEE NOTE 3



NOTES:

1. SEE PRINT 53 101 REQUIREMENTS FOR SLAB DETAILS.
2. CONDUIT SHOULD BE PUT IN OPENING AND SURROUNDED WITH SAND.
3. 1" PVC CONDUIT FOR GROUND GRID LEADS.
4. ALL REBAR TO BE #5Ø.

REINFORCING SCHEDULE			
TYPE	NO.	LENGTH	TOTAL
S1	4	7'-0"	28'-0"
S2	4	3'-0"	12'-0"
CONC. VOLUME=0.92 c.y.			

PSNH

DISTRIBUTION STANDARDS

ISSUE	DATE
R1	4-90
ORIGINAL	5-84