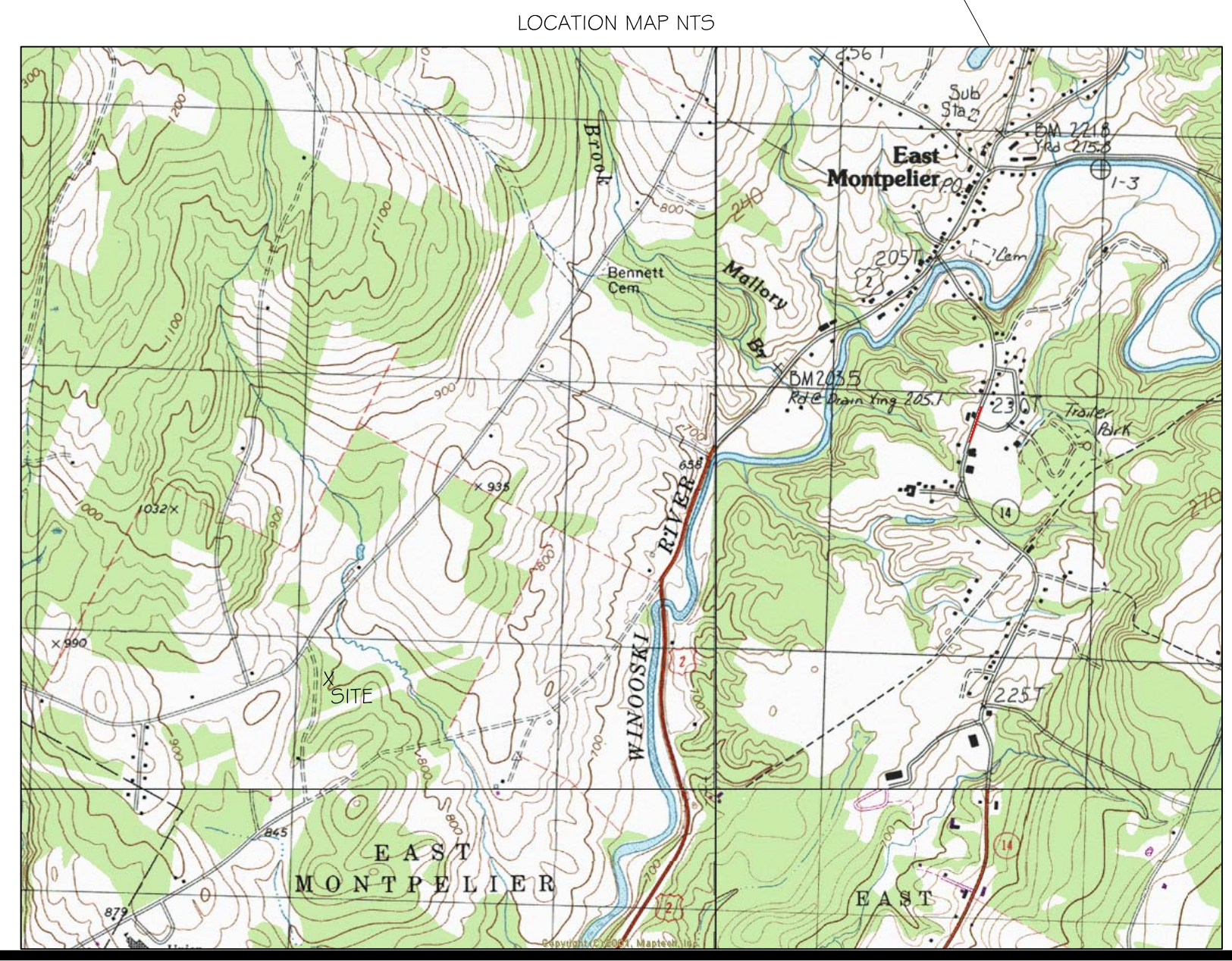
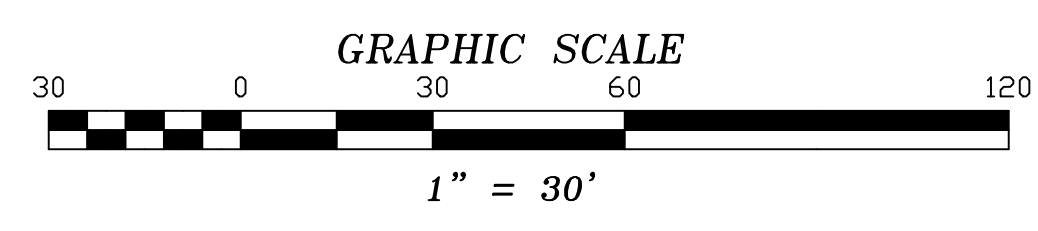


NOTES:  
 -WETLANDS DELINEATED HEREON AS ESTABLISHED BY GILMAN & BRIGGS ENVIRONMENTAL AND LOCATED BY THIS FIRM. REFERENCE WETLAND PERMIT FOR LIMITATIONS REGARDING DISTURBANCE IN WETLAND.  
 - PROPERTY LINE INFORMATION INCLUDING LOCATION, DIMENSIONS, AND ACREAGE BASED ON SURVEY BY JOHN H. THETFORD L.S., DATED JAN. 1989, ENTITLED "BOWMAN SUBDIVISION" AS FILED IN THE TOWN LAND RECORDS. THE INFORMATION IS SHOWN HEREON FOR WASTEWATER PERMITTING PURPOSES ONLY AND CAN NOT BE RELIED UPON FOR ACCURATE BOUNDARY LOCATIONS.  
 -CONTRACTOR SHALL BE RESPONSIBLE FOR ALL EROSION CONTROL AND PREVENTION MEASURES.

**LEGEND**

- ⊕ SOILS TEST PIT
- + PERCOLATION TEST
- UTILITY POLE
- PROPERTY LINE±
- ROAD R.O.W. LIMITS±
- 1' INTERVAL CONTOUR LINE
- 5' INTERVAL CONTOUR LINE
- EDGE OF GRAVEL
- EDGE OF PAVEMENT
- EDGE OF WETLANDS
- WETLAND BUFFER
- UNDERGROUND UTILITY±
- STONEWALL



**SITE PLAN**

EAST MONTPELIER, VERMONT

SCALE: 1"=30'	DATE: 9-5-2012	PROJ.#2012-106	DWG.# 12106A
DRAWN BY: CDC	CHECKED BY: DEC	FB/PG, SLB17	SHEET SP1

**CHASE & CHASE**  
 SURVEYORS & SEPTIC DESIGNERS INC.  
 301 N. MAIN ST. - BARRE, VT. 05641  
 (802)-479-9636

