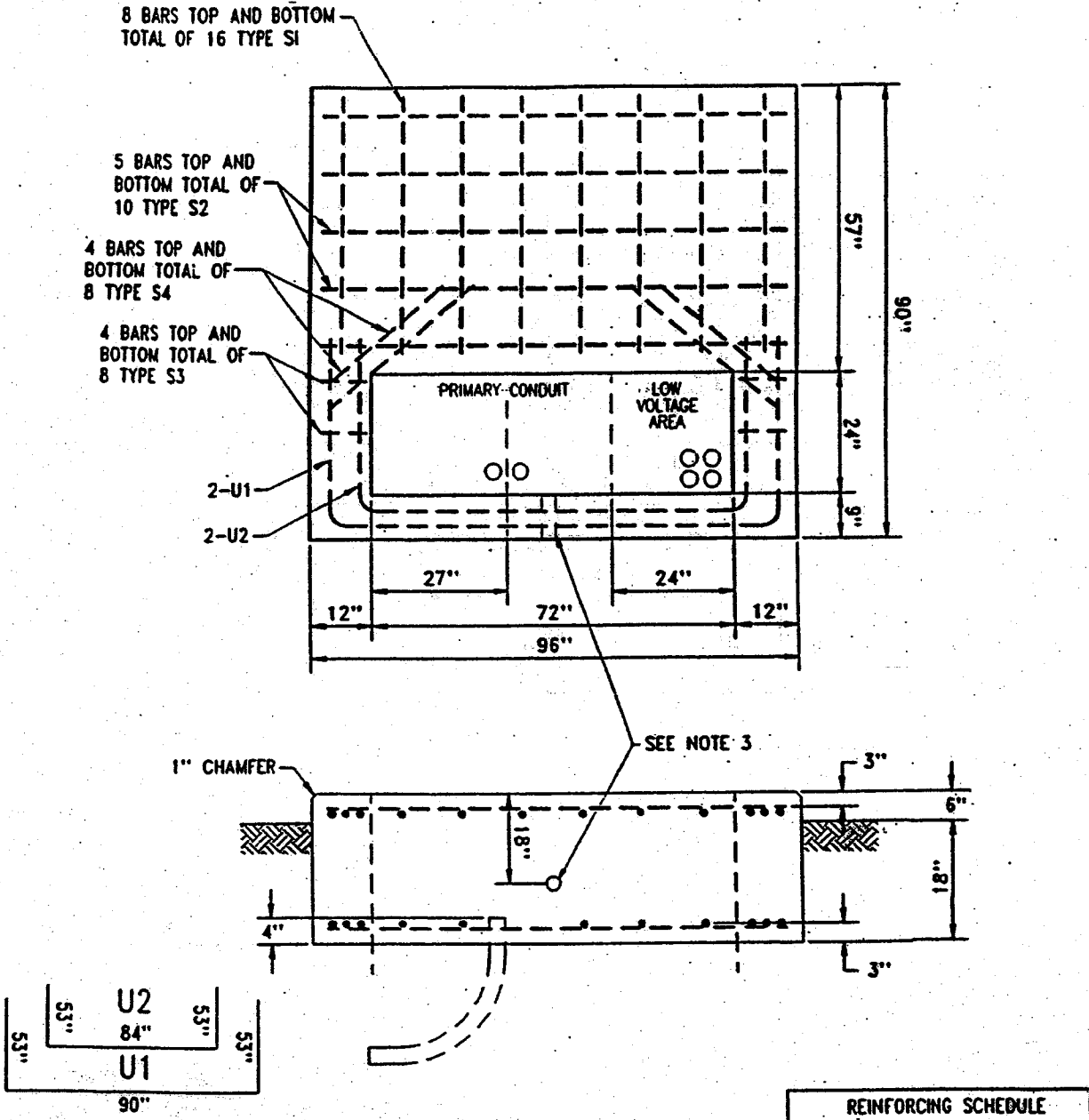


3 Ø PADMOUNTED TRANSFORMER SLAB DETAIL

(53)116

15 KV 750 TO 2500 KVA DEAD FRONT
34 KV 75 TO 2500 KVA DEAD FRONT



NOTES:

1. SEE PRINT (53) 101 REQUIREMENTS FOR SLAB DETAILS.
2. SEE DTR 56.223 FOR GROUNDING GRID.
3. 1" PVC CONDUIT FOR GROUND LEADS.
4. ALL REBAR TO BE #5@.
5. CONDUITS CUT 4" ABOVE BASE OF SLAB.

REINFORCING SCHEDULE			
TYPE	NO.	LENGTH	TOTAL
S1	16	4'-6"	72'-0"
S2	10	7'-6"	75'-0"
S3	8	0'-6"	4'-0"
S4	8	2'-0"	16'-0"
CONC. VOLUME=4.44 c.y. TOP SECTION ONLY			

	Public Service of New Hampshire	CONSTRUCTION REQUIREMENT		ISSUE	DATE
				Original	2/1/83
				Rev.	1/4/06