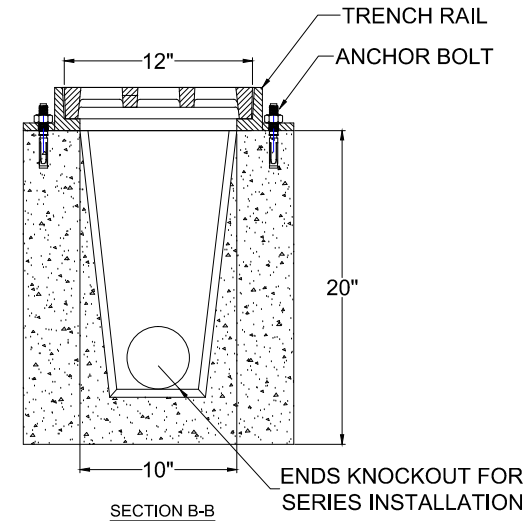


SECTION A-A



SECTION B-B

- EACH TRENCH DRAIN HAS A 10" OPEN WIDTH. THIS ALLOWS YOU TOO USE EITHER A12" OR 14" GRATE.
- 5" WIDTH OF TOP SHELF ALLOWS EITHER ANGLE IRON RAILS OR CAST IRON RAILS.
- ALL OPEN SECTIONS ARE CHAMFERED. THIS ALLOWS A SMOOTH TRANSITION AFTER MORTARING THE JOINTS. NO UGLY MORTAR JOINTS FOR LEAVES AND SILT TO BUILD UP.
- ONE MOLD GIVES YOU THE OPTION OF MAKING 6', 4' OR 3' SECTIONS. EACH SECTION CAN MAKE EITHER AN OPEN/OPEN ( MID SECTION) , OR AN OPEN/CLOSE ( ENS SECTION) . YOU CAN EVEN MAKE A STAND ALONE CLOSED/CLOSED 6' SECTION FOR THAT SMALL JOB.
- EACH SECTION IS 5" THICK AND TAPERS TO 6" THICK FOR A TRUE H-20 DESIGN.

**Specifications :**

- Concrete Minimum Compressive Strength - 4,000 psi @ 28 days added with Rebar Mesh.
- Steel Reinforcement :  
#3 Deformed Bar ( Gr.40) ASTM A-615, or equal

**NOTES :**

WATER PASS AREA 87 SQ. INCH . ( PER TRENCH GRATE )

**MATERIAL :**

DOCUMENT APPROVED BY : DATE :

DWNG DATE : 05/08/2019

CHKD DATE :

**TOLERANCE**

**MODEL NO.**

LOAD RATING

REVISION 1 - DATE

REVISION 2 - DATE

H - 20

REV



**A.J. Foss Inc.**

100 Cocheco Rd.  
Farmington NH 03835  
Phone: 603-755-2515

2" X 12" X 24" BP GRATE WITH 2" X 48" TRENCH RAIL