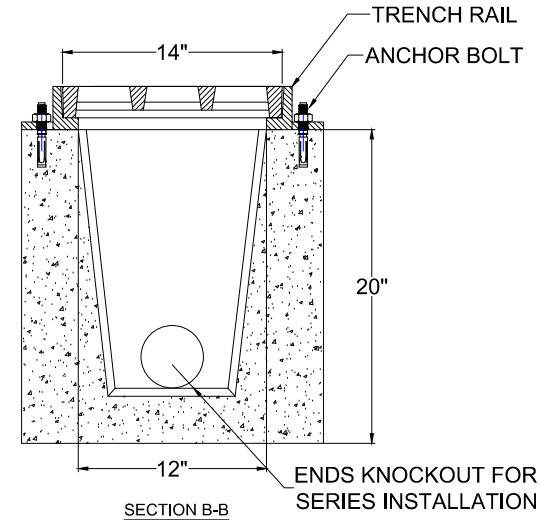


SECTION A-A



SECTION B-B

- EACH TRENCH DRAIN HAS A 10" OPEN WIDTH. THIS ALLOWS YOU TOO USE EITHER A12" OR 14" GRATE.
- 5" WIDTH OF TOP SHELF ALLOWS EITHER ANGLE IRON RAILS OR CAST IRON RAILS.
- ALL OPEN SECTIONS ARE CHAMFERED. THIS ALLOWS A SMOOTH TRANSITION AFTER MORTARING THE JOINTS. NO UGLY MORTAR JOINTS FOR LEAVES AND SILT TO BUILD UP.
- ONE MOLD GIVES YOU THE OPTION OF MAKING 6',4' OR 3' SECTIONS. EACH SECTION CAN MAKE EITHER AN OPEN/OPEN (MID SECTION) , OR AN OPEN/CLOSE (ENS SECTION) . YOU CAN EVEN MAKE A STAND ALONE CLOSED/CLOSED 6' SECTION FOR THAT SMALL JOB.
- EACH SECTION IS 5" THICK AND TAPERS TO 6" THICK FOR A TRUE H-20 DESIGN.

Specifications :

- Concrete Minimum Compressive Strength - 4,000 psi @ 28 days added with Rebar Mesh.
- Steel Reinforcement :
#3 Deformed Bar (Gr.40) ASTM A-615, or equal

NOTES :

WATER PASS AREA 107 SQ. INCH . (PER TRENCH GRATE)

MATERIAL :

DOCUMENT APPROVED

BY : DATE :

DWNG DATE : 05/08/2019

CHKD DATE :

TOLERANCE

MODEL NO.

LOAD RATING

REVISION 1 - DATE

REVISION 2 - DATE

H - 20

REV



A.J. Foss Inc.

100 Cocheco Rd.
Farmington NH 03835
Phone: 603-755-2515

2" X 14" X 24" BP GRATE WITH 2" X 48" TRENCH RAIL