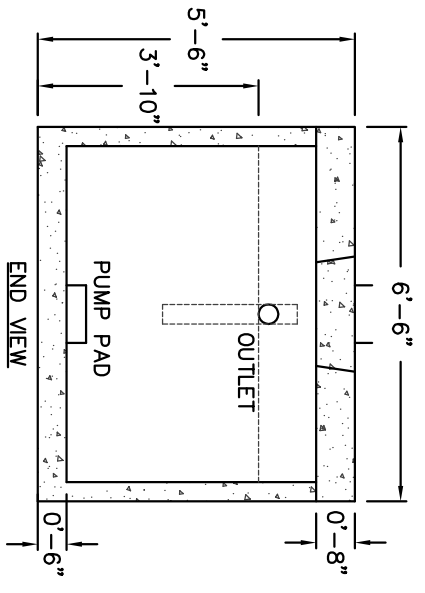
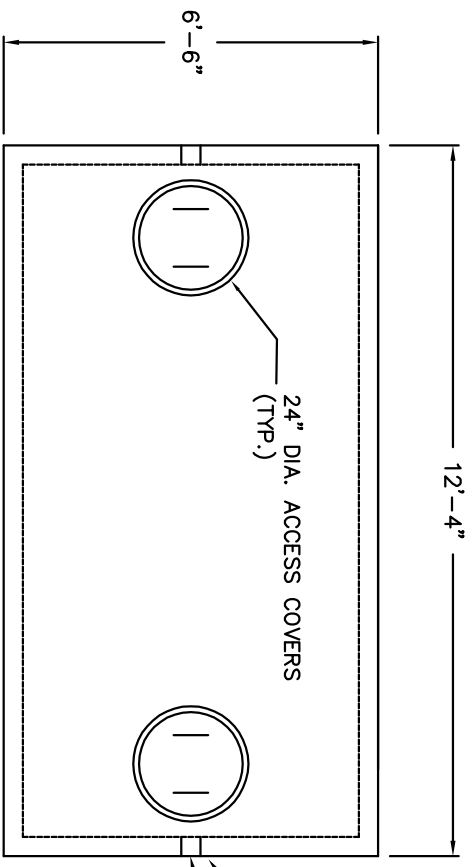


SECTION VIEW
 N.T.S.



END VIEW
 N.T.S.



TOP VIEW
 N.T.S.

- NOTES:
1. CONCRETE: 5,000 PSI MIN. AFTER 28 DAYS
 2. ALL REINFORCEMENT PER ASTM C1227-93
 3. TEES AND GAS BAFFLE SOLD SEPARATELY
 4. TONGUE & GROOVE JOINT SEALED WITH BUTYL RESIN
 5. 4" POLYLOK IV CLOSED END BOOTS USED FOR CONNECTIONS.
 6. PLASTIC RISERS CAN BE POURED INTO COVER
 7. PUMPS & ACCESSORIES OPTIONAL

4" THICK WALLS
 4" POLYLOK CLOSED END BOOT (TYP.)

24" DIA. ACCESS COVERS (TYP.)



100 COACHECO RD.
 FARMINGTON, NH 03835
 OFFICE: (603) 755-2515
 FAX: (603) 278-7878

1,600 MONO TANK
H-20 SINGLE COMPARTMENT

| | |
|----------------------|---------------------------|
| 1,600 MONO TANK H-20 | |
| FOR: AJ FOSS | DATE: Feb 11, 2016 |
| 100 COACHECO ROAD | FILE NAME: 1600 MONO H-20 |
| FARMINGTON, NH 03835 | DRAWN BY: SO |
| FAX: (603) 278-7878 | |