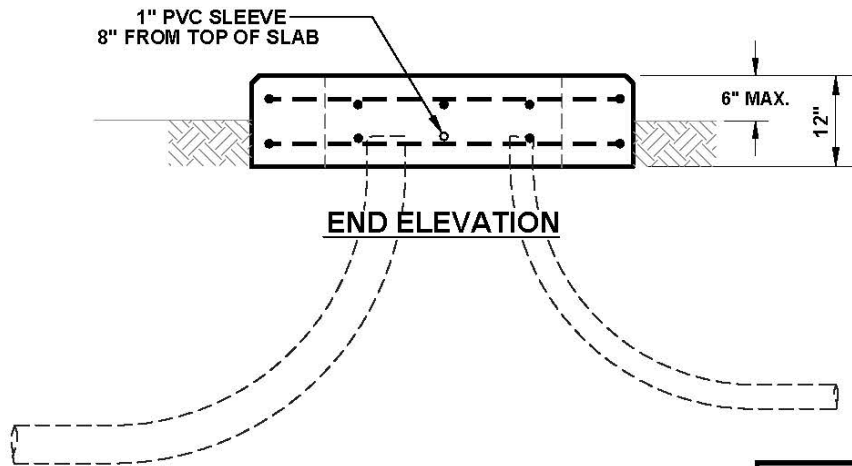
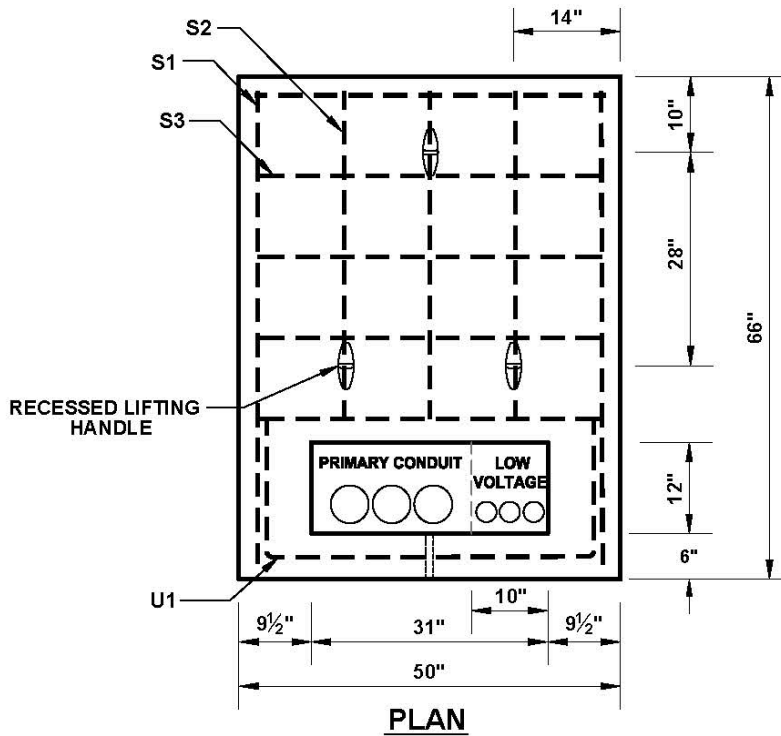


Single Phase Transformer Foundation 100-250 KVA



| REINFORCING SCHEDULE (#6 BAR) | | | |
|-------------------------------|-----|--------|----------|
| Type | Qty | Length | Diagram |
| S1 | 4 | 62" | Straight |
| S2 | 6 | 44" | Straight |
| S3 | 10 | 46" | Straight |
| U1 | 2 | 78" | |

Total Foundation Weight, 3030 lbs.

EVERSOURCE INTERNAL REFERENCE 53.102L

Refer to [Installation Requirements for Padmounted Transformer and Sector Cabinets](#) for additional details.