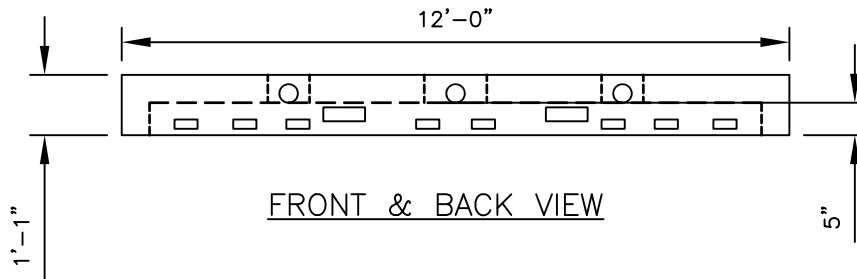
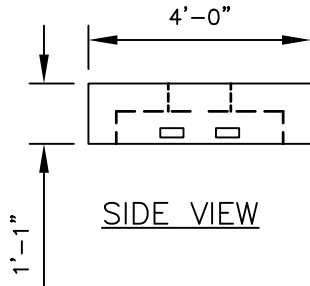


PLAN VIEW



FRONT & BACK VIEW



SIDE VIEW

4'X12'X13"
CONCRETE CHAMBER

NOTE:

1. $f'_c = 5,000$ PSI @ 28 DAYS
2. PORTLAND TYPE III CEMENT
3. NOT ALL INLETS NEED TO BE USED. JUST AN OPTION OF UP TO 3 ON 12' SIDE.

ANDREW J. FOSS, INC.
THE SIGNATURE OF QUALITY PRECAST

100 COCHECO RD.
FARMINGTON, NH 03835
OFFICE: (603) 755-2515
FAX: (603) 278-7878

4'X12'X13" CONCRETE CHAMBER	
FOR: AJ FOSS	DATE: APRIL 18, 2021
100 COCHECO ROAD	FILE NAME: 4X12X13
FARMINGTON, NH 03835	
PHONE:(603)755-2515	
FAX(603)278-7878	DRAWN BY: SO