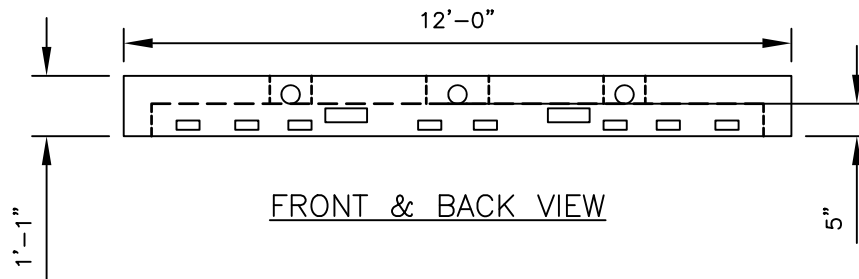
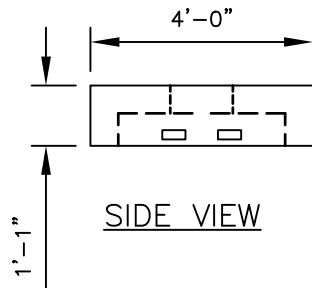


PLAN VIEW



FRONT & BACK VIEW



SIDE VIEW

**4'X12'X13"**  
**CONCRETE CHAMBER**

*ANDREW J. FOSS, INC.*  
*THE SIGNATURE OF QUALITY PRECAST*

**NOTE:**

1.  $f_c = 5,000$  PSI @ 28 days
2. Portland type III cement
3. Not all inlets need to be used.  
Just an option of up to 3 on 12' side.
4. 4" Perforated pipe needs to be installed into chamber.

100 COCHECO RD.  
FARMINGTON, NH 03835  
OFFICE: (603) 755-2515  
FAX: (603) 278-7878

4'X12'X13" CONCRETE CHAMBER	
FOR: AJ FOSS	DATE: APRIL 18, 2021
100 COCHECO ROAD	FILE NAME: 4X12X13
FARMINGTON, NH 03835	
PHONE:(603)755-2515	
FAX:(603)278-7878	DRAWN BY: SO