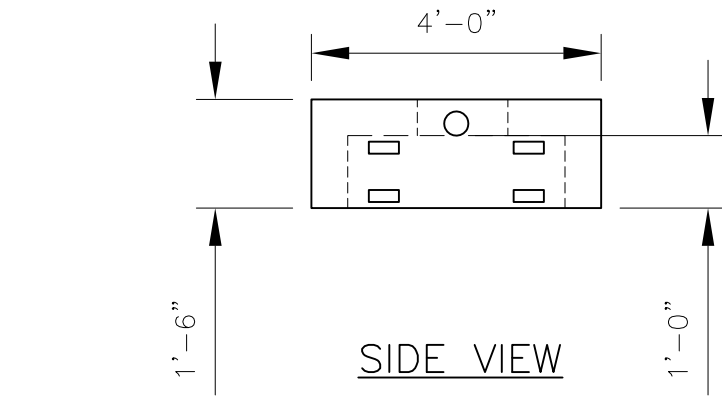
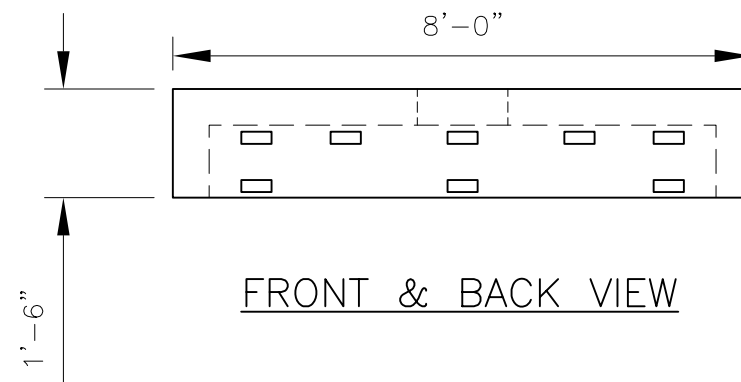


PLAN VIEW



NOTE:

1. $f_c = 5,000$ PSI @ 28 days
2. Portland type III cement
3. 4" Perforated pipe needs to be installed into chamber.

			PREPARED FOR: ANDREW J. FOSS CO. INC. 100 CONCHECO ROAD FARMINGTON, NH 03835 PHONE(603)755-2515 FAX(603)755-9249		
REV. NO.	DATE	REVISION	DATE: 9/18/09	SHEET TITLE: SKETCH	DRWN BY: GJP
			SCALE: N.T.S.		CKD BY: KMK
PREPARED BY: DELTA ENGINEERS, ARCHITECTS, & LAND SURVEYORS 184 COURT STREET, BINGHAMTON, NY 13901 TEL: (607) 231-6600 FAX: (607) 231-6650			PROJECT: 4' x 8' x 18" CONCRETE CHAMBER		
			CONTRACTOR:		DWG. LD. SK-01
			DELTA PROJ. NO.: 2009.367.001		SHT. NO. 1 OF 1